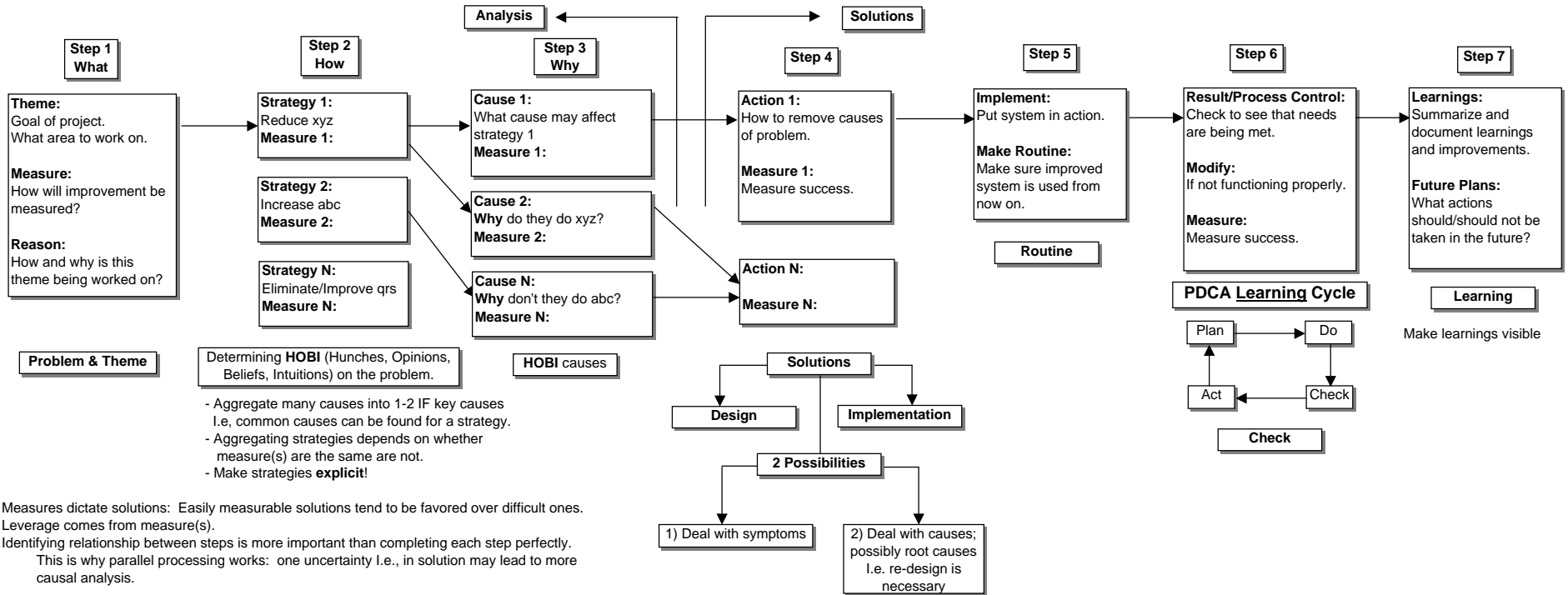


# Project Solution Bridge

Solution = bridge from problem to implementation



Measures dictate solutions: Easily measurable solutions tend to be favored over difficult ones. Leverage comes from measure(s). Identifying relationship between steps is more important than completing each step perfectly. This is why parallel processing works: one uncertainty I.e., in solution may lead to more causal analysis.

When analyzing causes, look for **barriers** against strategies.

## Prioritize and select.

Let your client/customer determine the solution and give you assurance that it will be accepted!